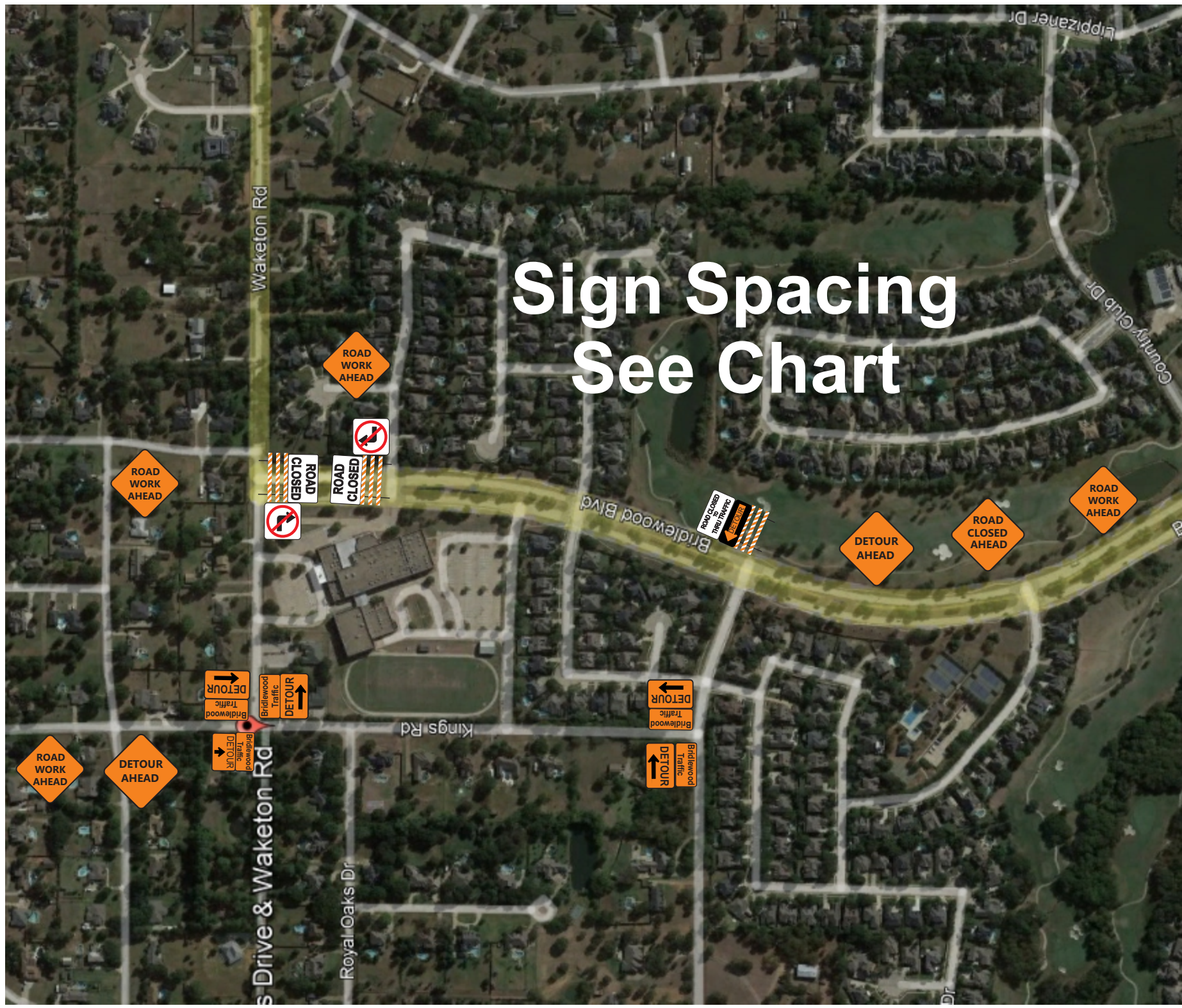
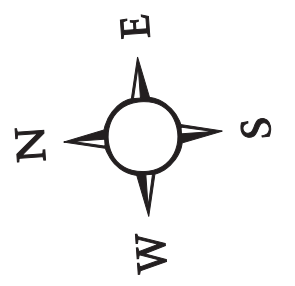


NOTICE

THIS PLAN IS FOR ILLUSTRATIVE PURPOSES ONLY AND IS NOT INTENDED TO RELIEVE THE CONTRACTOR FROM THE REQUIREMENTS OF THE CONTRACT DOCUMENTS, THE MOST CURRENT VERSION OF THE TEXAS MUTCD AND ALL OTHER APPLICABLE REQUIREMENTS. ANY CHANGES TO THIS PLAN, WORK ZONE CONDITIONS, OR TRAFFIC CONDITIONS, ALSO DO NOT RELIEVE THE CONTRACTOR FROM MAINTAINING PROPER WORK ZONE SAFETY AND THE SAFETY OF THE GENERAL PUBLIC. ANY CHANGES SHALL MEET THE REQUIREMENTS OF THE CONTRACT DOCUMENTS, THE MOST CURRENT VERSION OF THE TEXAS MUTCD AND ALL OTHER APPLICABLE GUIDELINES AND SPECIFICATIONS.



Sign Spacing See Chart



See Sheet 2 for
Lane Closure on
Bridlewood Blvd

**Suggested Advance Warning
Sign Spacing for
Conventional Highways**

Posted Speed (MPH)	Sign Spacing (Feet)	Taper Length 12' W (Feet)	Suggested Maximum Spacing of Devices	
			On a Taper	On a Tangent
30	120	180	30	60
35	160	245	35	70
40	240	320	40	80
45	320	540	45	90
50	400	600	50	100
55	500	660	55	110

Bridlewood Blvd
Waketon Rd

Owner	City of Flower Mound		
Project Name	Waketone Rd Reconstruction #1213		
Prime Contractor	Ed Bell Construction Company		
Date	7/28/2022	Sheet Number	Page 1
Drawn By CrossRoads, L.P. Barricade & Traffic Safety Services 5012 David Strickland Rd. Fort Worth, Texas 76119 Voice: (817) 634-0044 Fax: (817) 634-0048			